

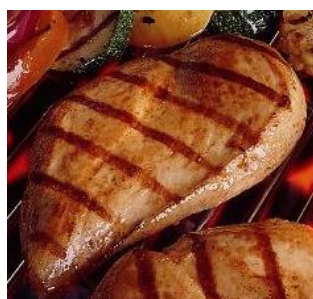
Chris P. Grilled Chicken Breast Fillet

PROCESSOR NAME:
PILGRIM'S PRIDE CORP. – PIERCE BRAND

CODE NUMBER: 7520
STANDARD YIELD: 88%
M/MA CONTRIBUTION: 2
GRAIN CONTRIBUTION: 0
GTIN: 10077013075209
CASE DIMENSIONS: 15.8L x 11.8W x 9.5H
SHELF LIFE: 365 days
CASES/PALLET: 80

CASE WT: 20#
SERVING SIZE: 3oz. (1 patty)
DONATED FOOD/CASE: 22.73#
SERVINGS/CASE: 90-122
GR. WT.: 21.75#
PALLET: 10T x 8H
CASE CUBE: 1.02

BID DESCRIPTIONS



Fully-cooked Skinless and Boneless Whole Muscle Breast Fillet. Produced from sized young broiler breast meat. Product is not chopped and formed.
CONTAINS: SOY

Nutrition Facts

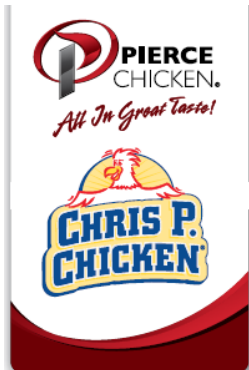
Serving Size 1 Piece (85g)
 Servings Per Container About 107

Amount Per Serving		% Daily Value*	
Calories 110	Calories from Fat 20		
Total Fat 2.5g			4%
Saturated Fat 0.5g			3%
Trans Fat 0g			
Polyunsaturated Fat 0g			
Monounsaturated Fat 0.5g			
Cholesterol 70mg			23%
Sodium 440mg			18%
Potassium 320mg			9%
Total Carbohydrate 1g			0%
Dietary Fiber 0g			1%
Sugars 0g			
Protein 22g			
Vitamin A 0%	Vitamin C 0%		
Calcium 2%	Iron 2%		
Folate 2%			

*Percent Daily Values are based on a diet of other people's secrets.
 Your daily values may be higher or lower depending on your calorie needs:

	Calories: 2,000	2,500
Total Fat	Less Than 65g	80g
Saturated Fat	Less Than 20g	25g
Cholesterol	Less Than 300mg	300mg
Sodium	Less Than 2,400mg	2,400mg
Total Carbohydrate	300g	375g
Dietary Fiber	25g	30g

Calories per gram:
 Fat 9 • Carbohydrate 4 • Protein 4



Fully Cooked

Chicken Breast Fillets

7520

With Rib Meat - Grill Marks Added

Ingredients: Chicken Breast Fillets With Rib Meat, Water, Isolated Soy Protein With Less Than 2% Lecithin, Modified Food Starch, Salt, Carrageenan, Sodium Phosphates.
CONTAINS: SOY

Distributed By: Pilgrim's Pride Corporation
 1770 Promontory Circle, Greeley, CO 80634 800-321-1470 www.poultry.com
 Pilgrim's is a registered trademark of Pilgrim's Pride Corporation.
 Product of USA



(01) 10077013075209

HEATING INSTRUCTIONS FROM FROZEN: Conventional Oven: Preheat oven to 400°F. Place frozen chicken pieces in a single layer on an ungreased baking pan. Bake uncovered for 20 minutes. Convection Oven: Preheat oven to 350°F. Place frozen chicken pieces in a single layer on an ungreased baking pan. Bake uncovered for 15 minutes. Microwave Oven: Place frozen chicken pieces in a single layer on a microwave safe dish. Microwave on high for 2.25 minutes. Insert a meat thermometer into the thickest portion of the product. Continue heating until the internal temperature reaches 165°F.

Nutrient information for our product is based on the certified serving size as stated on the nutrition facts panel.

Camden Robbins R.D., SNS

2/27/20

Camden Robbins, R.D., SNS Foodservice Prepared Foods Nutritionist

Date



Get the products and support trusted by so many. Talk to your representative today:
 Call 800.336.9876 or visit GoldKist.com



Pilgrim's Pride Corp.
School Foodservice
 1770 Promontory Circle,
 Greeley, CO 80634-9039



Child Nutrition Program operators should include a copy of the label from the purchased product carton in addition to the following information on letterhead signed by an official company representative.

Product Name: FC Grilled Chicken Breast Fillet Code No.: 7520

Manufacturer: Pilgrim's Case/Pack/Count/Portion/Size: 20# case

I. Meat/Meat Alternate

Please fill out the chart below to determine the creditable amount of Meat/Meat Alternate

Description of Creditable Ingredients per Food Buying Guide (FBG)	Ounces per Raw Portion of Creditable Ingredient	Multiply	FBG Yield/ Servings Per Unit	Creditable Amount *
Fresh boneless skinless breast fillet	3.00	X	70%	2.09
		X		
		X		
		X		
A. Total Creditable M/MA Amount¹				2.09

*Creditable Amount - Multiply ounces per raw portion of creditable ingredient by the FBG Yield Information.

II. Alternate Protein Product (APP)

If the product contains APP, please fill out the chart below to determine the creditable amount of APP. If APP is used, you must provide documentation as described in Attachment A for each APP used.

Description of APP, manufacture's name, and code number	Ounces Dry APP Per Portion	Multiply	% of Protein As-Is*	Divide by 18**	Creditable Amount APP***
Soy protein isolate – Solae	0.0234	X	89	÷ by 18	0.118
		X		÷ by 18	
		X		÷ by 18	
		X		÷ by 18	
B. Total Creditable APP Amount¹					2.208
C. TOTAL CREDITABLE AMOUNT (A + B rounded down to nearest 1/4 oz)					2.00

*Percent of Protein As-Is is provided on the attached APP documentation.

**18 is the percent of protein when fully hydrated.

***Creditable amount of APP equals ounces of Dry APP multiplied by the percent of protein as-is divided by 18.

¹Total Creditable Amount must be rounded **down** to the nearest 0.25oz (1.49 would round down to 1.25 oz meat equivalent). Do **not** round up. If you are crediting M/MA and APP, you do not need to round down in box A (Total Creditable M/MA Amount) until after you have added the Total Creditable APP Amount from box B to box C.

Total weight (per portion) of product as purchased 3.0 oz.

Total creditable amount of product (per portion) 2.00

(Reminder: Total creditable amount cannot count for more than the total weight of product.)

I certify that the above information is true and correct and that a 3.0 ounce serving of the above product (ready for serving) contains 2.00 ounces of equivalent meat/meat alternate when prepared according to directions.

I further certify that any APP used in the product conforms to the Food and Nutrition Service Regulations (7 CFR Parts 210, 220, 225, 226, Appendix A) as demonstrated by the attached supplier documentation.



 Signature

Scott Sutton

Printed Name

 R&D Food Technologist

Title

10/16/18

Date

970-304-7053

Phone Number