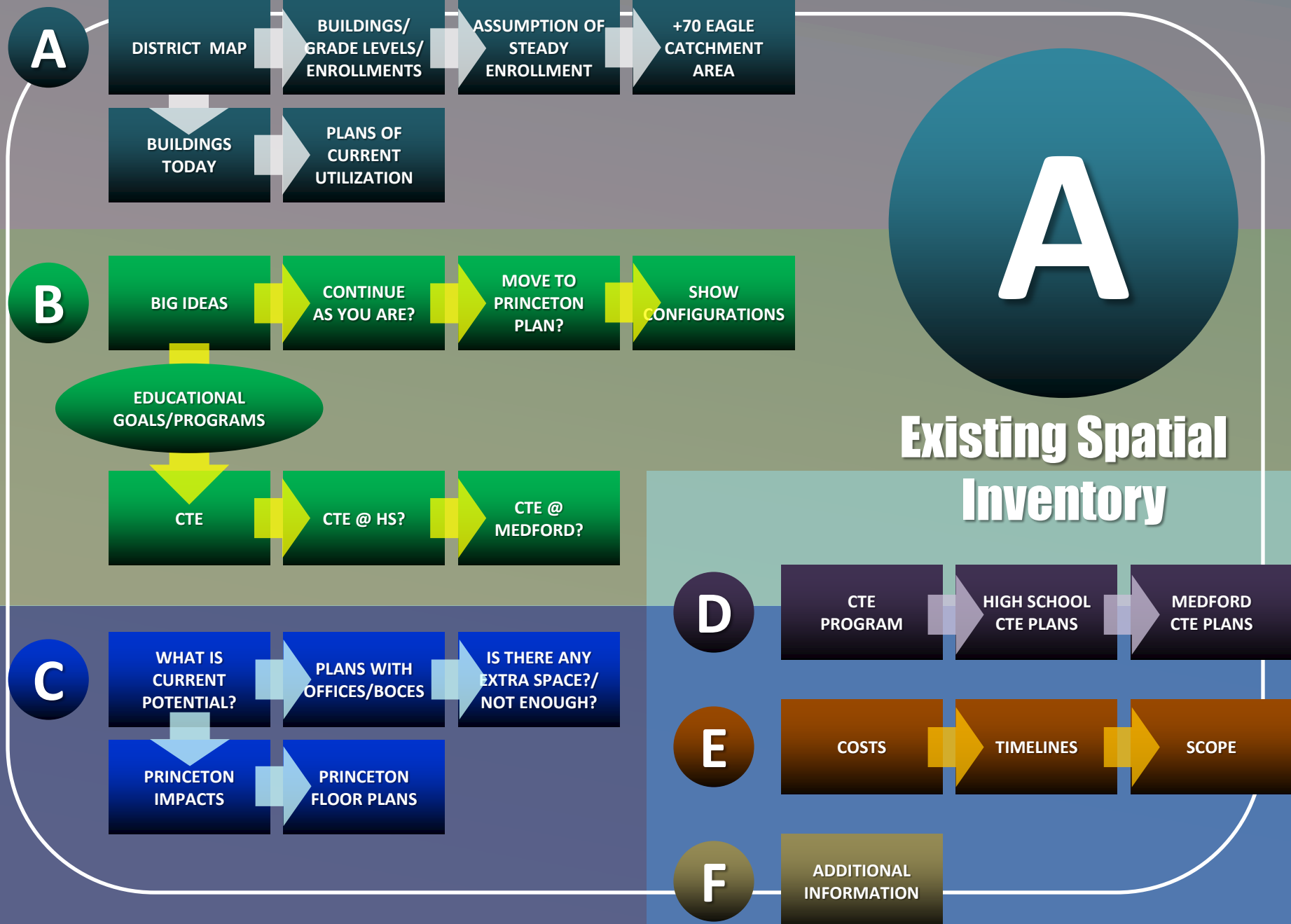


Planning Update

March 5, 2018



Existing

Map showing 12 numbered locations in Patchogue, NY. The locations are marked with colored circles: yellow (1, 3, 4, 5, 6, 7, 11), green (8, 9, 10, 12), and red (11). The map includes labels for Farmingville, Medford, Patchogue, East Patchogue, and Bellport, as well as major roads like I-495 and I-112.

- 1 (K-5) Barton
- 2 (K-5) Bay
- 3 (K-5) Canaan
- 4 (K-5) Eagle
- 5 (K-5) Medford
- 6 (K-5) River
- 7 (K-5) Tremont
- 8 (6-8) Saxton
- 9 (6-8) Oregon
- 10 (6-8) South Ocean
- 11 (9-12) High School
- 12 Administration

Current Enrollments

(K-5)	Barton	520 students
(K-5)	Bay	323 students
(K-5)	Canaan	518 students
(K-5)	Eagle	590 students
(K-5)	Medford	531 students
(K-5)	River	377 students
(K-5)	Tremont	461 students
(6-8)	Saxton	702 students
(6-8)	Oregon	511 students
(6-8)	South Ocean	517 students
(9-12)	High School	2,446 students

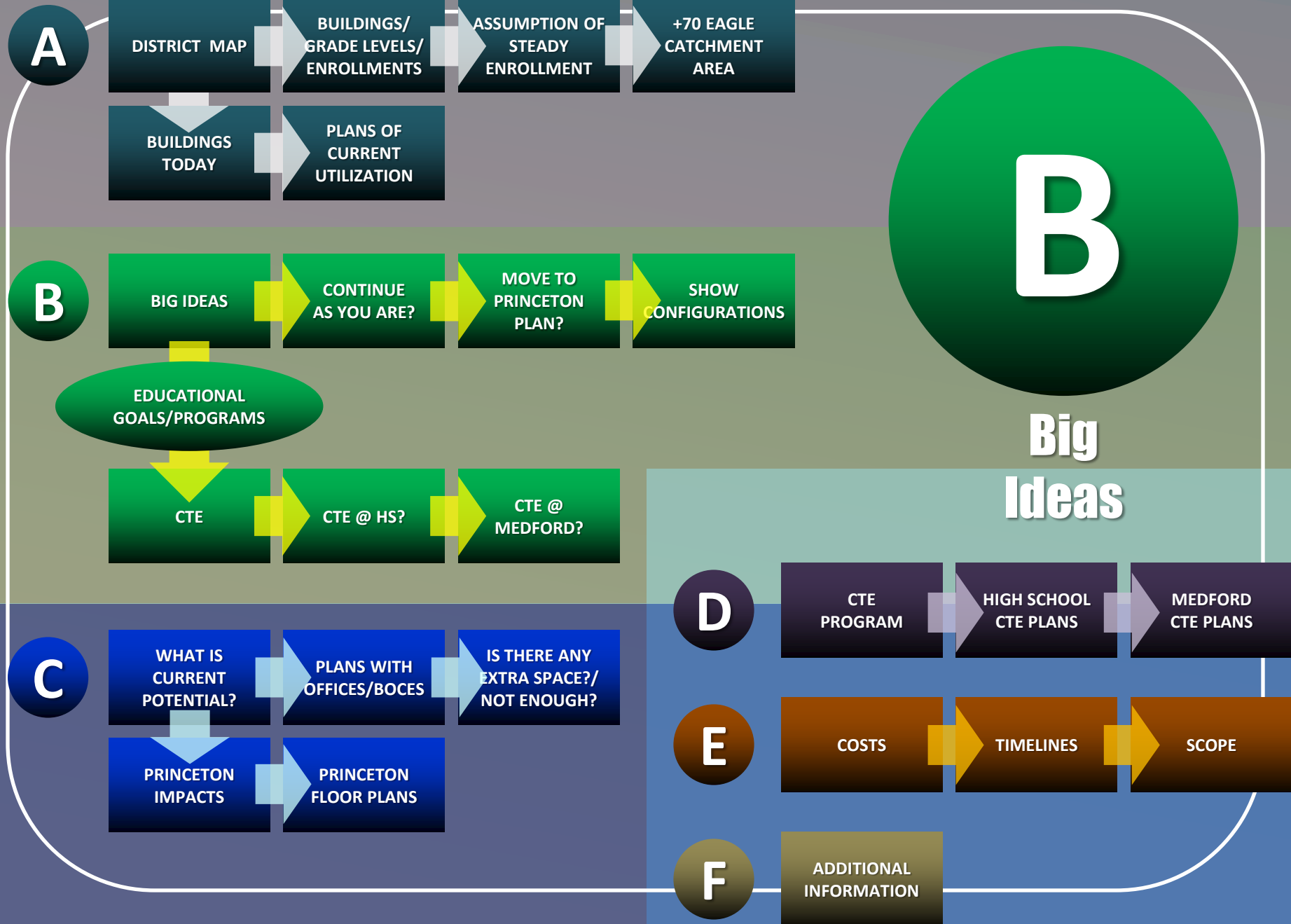
Current Enrollment Distribution

School	General/ Inclusion & Bilingual Classroom Sections	Special Education Sections	Total Sections	Enrollment		Kindergarten	Grade 1	Grade 2	Grade 3	Grade 4	Grade 5
Barton	21	13	34	520	Students	84	87	79	75	101	94
					CR Sections	3	4	3	3	4	4
					SPED Sections	3	2	2	2	2	2
Bay	17	0	17	323	Students	60	48	55	53	60	47
					CR Sections	3	3	3	3	3	2
					SPED Sections	0	0	0	0	0	0
Canaan	21	8	29	518	Students	77	91	96	89	98	67
					CR Sections	4	4	4	3	3	3
					SPED Sections	1	1	2	2	2	0
Eagle	26	0	26	590	Students	104	83	103	100	100	100
					CR Sections	5	4	5	4	4	4
					SPED Sections	0	0	0	0	0	0
Medford	26	1	27	531	Students	81	75	100	88	89	98
					CR Sections	5	5	5	3	4	4
					SPED Sections	0	0	0	1	0	0
River	18	0	18	377	Students	55	60	60	71	71	60
					CR Sections	3	3	3	3	3	3
					SPED Sections	0	0	0	0	0	0
Tremont	18	5	23	461	Students	70	78	65	66	69	113
					CR Sections	3	3	3	3	3	3
					SPED Sections	1	1	0	0	0	3
	(K-5) 3,320 students					Kindergarten	Grade 1	Grade 2	Grade 3	Grade 4	Grade 5
3,320				Students	531	522	558	542	588	579	
147				CR Sections	26	26	26	22	24	23	
27				SPED Sections	5	4	4	5	4	5	
	(6-8) 1,730 students			Enrollment		Grade 6	Grade 7	Grade 8			
Oregon				511	Students	157	163	191			
Saxton				702	Students	230	224	248			
So Ocean				517	Students	191	165	161			
				1,730		578	552	600			
	(9-12) 2,446 students			Enrollment		Grade 9	Grade 10	Grade 11	Grade 12		
High School				2,446	Students	617	587	591	651		

Current Spatial Utilization

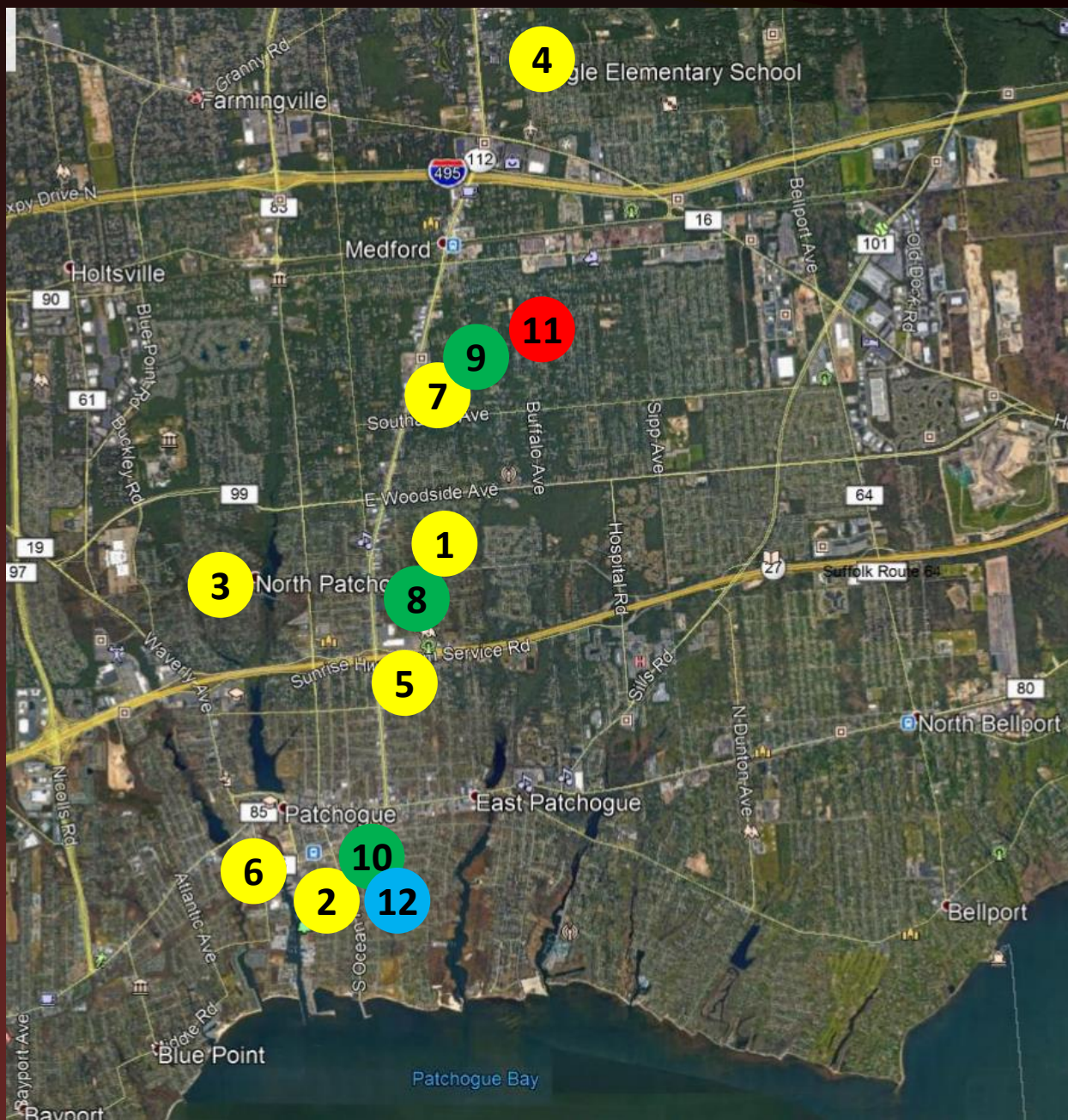
March 5, 2018

**How does each building use its space?
What spaces are provided for what purposes?**



Continue

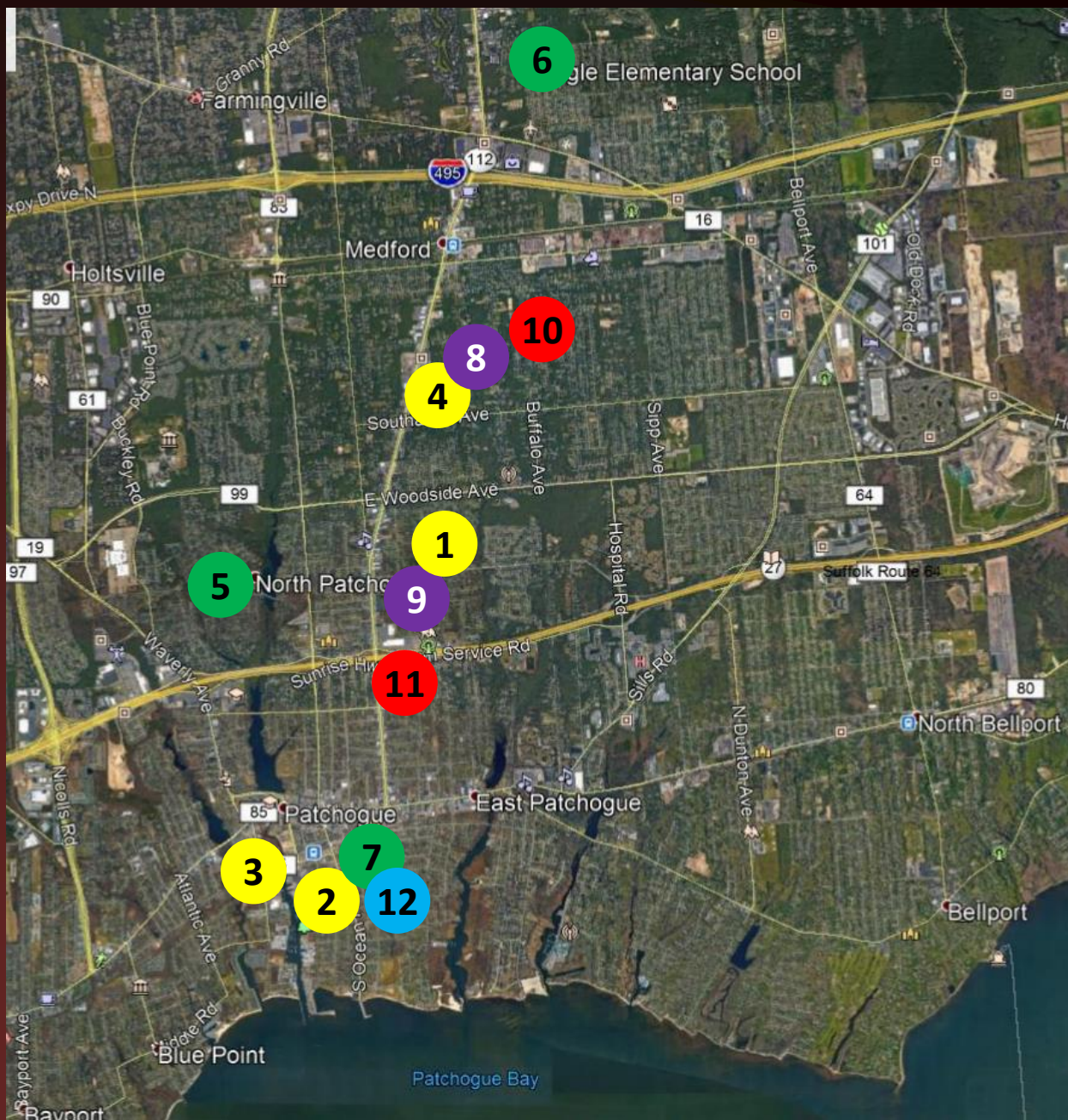
as you are...



- 1 (K-5) Barton
- 2 (K-5) Bay
- 3 (K-5) Canaan
- 4 (K-5) Eagle
- 5 (K-5) Medford
- 6 (K-5) River
- 7 (K-5) Tremont
- 8 (6-8) Saxton
- 9 (6-8) Oregon
- 10 (6-8) South Ocean
- 11 (9-12) High School
- 12 Administration

...or change to a

Princeton Plan?

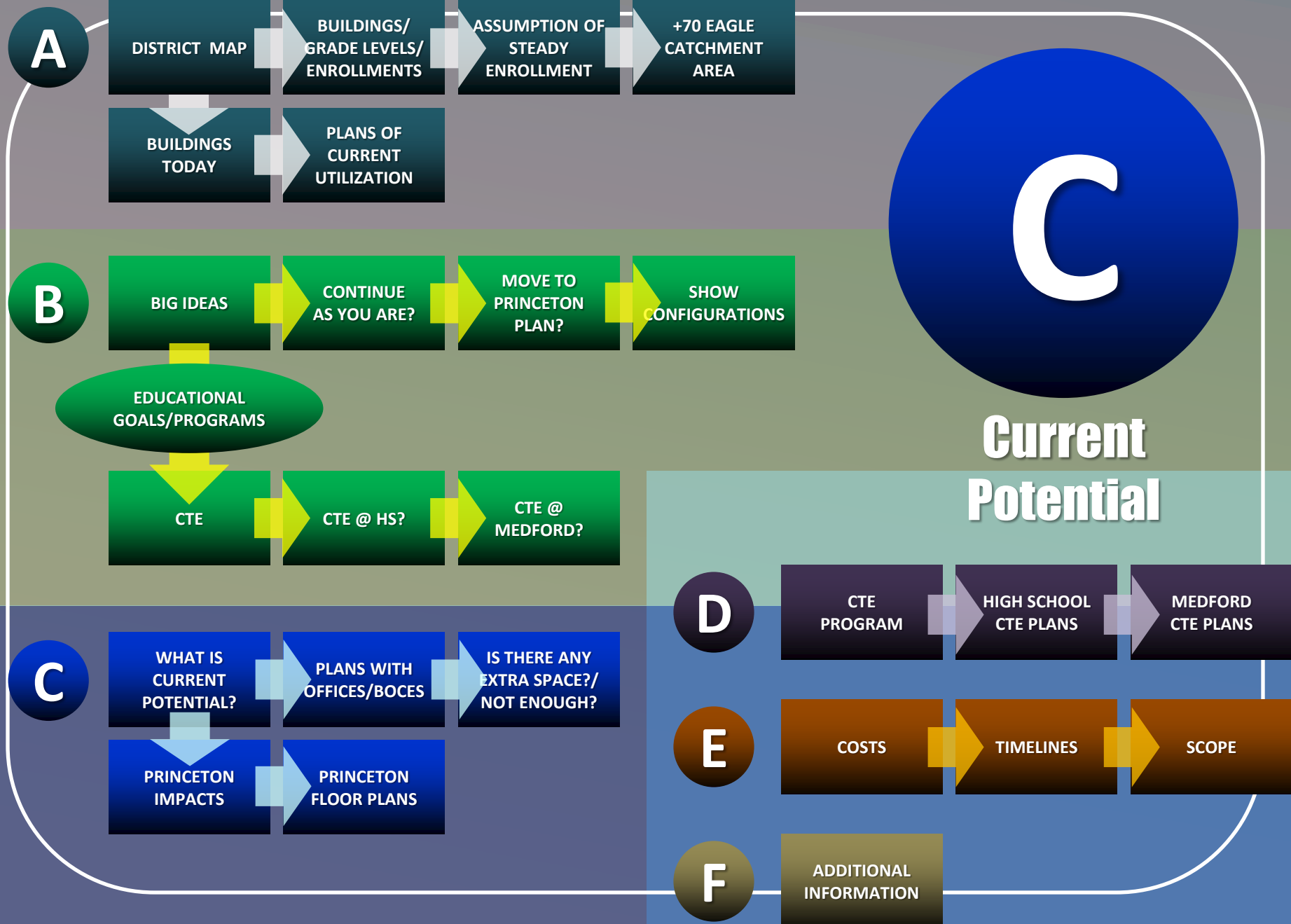


- 1 (PK-2) Barton
- 2 (PK-2) Bay
- 3 (PK-2) River
- 4 (PK-2) Tremont
- 5 (3-5) Canaan
- 6 (3-5) Eagle
- 7 (3-5) South Ocean
- 8 (6-8) Oregon
- 9 (6-8) Saxton
- 10 (9-12) High School
- 11 (9-12) Medford CTE
- 12 Administration

CTE Program

In-District?

**With Princeton Plan? Without Princeton Plan?
What Programs? Where? When?**



Current Building Potential

March 5, 2018

**Is there any extra space? Is there enough space?
Identify spaces > 550 SF for Classroom use.**

Potential Classroom Space

"Mathematical" comparison of adjusted capacities to enrollments based upon potential classroom spaces, (without accounting for equal distribution of sections).

(K-5) +38 CR
(6-8) +42 CR
(9-12) +22 CR

① SPED	<div> <div>"POTENTIAL" BOXES</div> <div>"EXTRA SPACE POSSIBLE" (>5500)</div> </div>	
① BARTON (520)K-5 21+13	$\left[\begin{array}{l} \text{COMPRESS SUPPORTS} = +4 \text{ CR} \\ (21 @ 25) = 525 > 520 \\ 51 = 7 \text{ SPECIALS} + 2 \text{ ADMIN} + 10 \text{ SUPPORT} + 32 \text{ CR} \end{array} \right] \left[\begin{array}{l} \text{CSE/SENIOR} = +2 \text{ CR} \end{array} \right] \rightarrow +6$	
BAY (323)K-5 17+0	$\left[\begin{array}{l} (18-17) = +1 \text{ CR} \\ (17 @ 25) = 425 > 323 \\ 22 = 3 \text{ SPECIALS} + 0 \text{ ADMIN} + 1 \text{ SUPPORT} + 18 \text{ CR} \end{array} \right] \left[\begin{array}{l} (425-323)/25 = 4 = +4 \text{ CR} \end{array} \right] \rightarrow +5$	
② CANADIAN (518)K-5 21+8	$\left[\begin{array}{l} (31-29) = +2 \text{ CR} \\ (21 @ 25) = 525 > 518 \\ 37 = 5 \text{ SPECIALS} + 0 \text{ ADMIN} + 1 \text{ SUPPORT} + 31 \text{ CR} \end{array} \right] \rightarrow +2$	
EAGLE (590)K-5 26+0	$\left[\begin{array}{l} (27-26) = +1 \text{ CR} \\ (26 @ 25) = 650 > 590 \\ 45 = 9 \text{ SPECIALS} + 0 \text{ ADMIN} + 9 \text{ SUPPORT} + 27 \text{ CR} \end{array} \right] \left[\begin{array}{l} \text{COMPRESS SUPPORTS} = +5 \text{ CR} \end{array} \right] \rightarrow +6$	
③ MEDFORD (531)K-5 26+1	$\left[\begin{array}{l} (30-27) = +3 \text{ CR} \\ (26 @ 25) = 650 > 531 \\ 37 = 5 \text{ SPECIALS} + 1 \text{ ADMIN} + 1 \text{ SUPPORT} + 30 \text{ CR} \end{array} \right] \left[\begin{array}{l} (650-531)/25 = 4 = +4 \text{ CR} \end{array} \right] \rightarrow +7$	
RIVER (377)K-5 18+0	$\left[\begin{array}{l} (21-18) = +3 \text{ CR} \\ (18 @ 25) = 450 > 377 \\ 25 = 4 \text{ SPECIALS} + 0 \text{ ADMIN} + 0 \text{ SUPPORT} + 21 \text{ CR} \end{array} \right] \left[\begin{array}{l} (450-377)/25 = 3 = +3 \text{ CR} \end{array} \right] \rightarrow +6$	
TREMONT (461) 18+5	$\left[\begin{array}{l} (29-23) = +6 \text{ CR} \\ (14 @ 25) = 350 < 461 \\ 39 = 7 \text{ SPECIALS} + 2 \text{ ADMIN} + 1 \text{ SUPPORT} + 29 \text{ CR} \end{array} \right] \rightarrow +6$	
SAXTON (702)	$\left[\begin{array}{l} (1,125-702)/25 = 16 = +16 \text{ CR} \\ (45 @ 25) = 1,125 \\ 70 = 12 \text{ SPECIALS} + 12 \text{ ADMIN} + 1 \text{ SUPPORT} + 45 \text{ CR} \end{array} \right] \rightarrow +16$	
OREGON (511)	$\left[\begin{array}{l} (875-511)/25 = 14 = +14 \text{ CR} \\ (35 @ 25) = 875 \\ 48 = 11 \text{ SPECIALS} + 1 \text{ ADMIN} + 1 \text{ SUPPORT} + 35 \text{ CR} \end{array} \right] \rightarrow +14$	
SOUTH OCEAN (517)	$\left[\begin{array}{l} (825-517)/25 = 12 = +12 \text{ CR} \\ (33 @ 25) = 825 \\ 50 = 9 \text{ SPECIALS} + 8 \text{ ADMIN} + 0 \text{ SUPPORT} + 33 \text{ CR} \end{array} \right] \rightarrow +12$	
HIGH SCHOOL (2446)	$\left[\begin{array}{l} (2,996-2,446)/25 = 22 = +22 \text{ CR} \\ (141 @ 25) = 3,525 = 2,996 @ 85\% \end{array} \right] \rightarrow +22$	
All figures subject to further review and discussion.		<div>MATHEMATICAL</div> <div>(K-5) = +38 CR = +/- (1) SCHOOL</div> <div>(6-8) = +42 CR = +/- (1) SCHOOL</div> <div>(9-12) = +22 CR = EXTRA SPACE</div>

Current Building Potential

March 5, 2018

Is there any extra space? Is there enough space?

‘Yes’ & ‘Yes’ = Flexibility Exists

Potential

Princeton Plan

Which Grade Levels at Which Schools?
How many students at each school?

Princeton Plan

Potential redistribution of current enrollment plus seventy (70) students in the Eagle catchment area.

Redistributed as follows:

- 4 (PK-2) Schools
- 3 (3-5) Schools
- 2 (6-8) Schools
- 1 (9-12) School
- 1 (9-12) CTE Facility

Current Enrollments by Grade Level

(K) = 531	EAGLE	
(1) = 522	$1,611 + (20) = 1,631 \div 4 = 408$	
(2) = 558	$(525 + 300 + 300 + 525) = 1,650 > 1,631$	
	+ 12 SPED	
	= 1,794 > 1,631	
(3) = 542	EAGLE	
(4) = 588	$1,709 + (20) = 1,729 \div 3 = 577$	
(5) = 579	$(600 + 600 + 600) = 1,800 > 1,729$	
	+ 9 SPED	
	= 1,908 > 1,729	
(6) = 578	EAGLE	
(7) = 552	$1,730 + (20) = 1,750 \div 2 = 875$	
(8) = 600	$(750 + 975) = 1,725 \approx 1,750$	
	+ 6 SPED	
	= 1,797 > 1,750	
(9) = 617	EAGLE	
(10) = 587	$2,446 + (10) = 2,456$	$143 \text{ TS @ } 25 = 3,575$
(11) = 591		$85\% = 3,038$
(12) = 651		$68\% = 2,456$

			(25/SECTION)	(18/SECTION)	
BARTON	(K-2)	525	$\frac{K}{2}$	7 SECTIONS EACH + 2 (PK)	543
BAY	(K-2)	300	$\frac{K}{2}$	4 SECTIONS EACH + 2 (PK)	336
RIVER	(K-2)	300	$\frac{K}{2}$	4 SECTIONS EACH + 2 (PK)	336
TREMONT	(K-2)	525	$\frac{K}{2}$	7 SECTIONS EACH + 2 (PK)	543
CANAAN	(3-5)	600	$\frac{K}{5}$	8 SECTIONS EACH	
EAGLE	(3-5)	600	$\frac{K}{5}$	8 SECTIONS EACH	
SOUTH OCEAN	(3-5)	600	$\frac{K}{5}$	8 SECTIONS EACH	
OREGON	(6-8)	750	$\frac{K}{3}$	10 SECTIONS EACH	
SAXTON	(6-8)	975	$\frac{K}{3}$	13 SECTIONS EACH	
HIGH SCHOOL	(9-12)	2,456			
MEDFORD	(9-12)				

Enrollment Distribution

Current & Potential Spatial Utilization

Alternate to Princeton Plan

School		Students	Capacity	Capacity	CR's	Potential Addn'l	Support	P.E.	Library	Computer Room	Art	Music	Yoga	STEAM/ STEM/ Science	Wonder/ Creation/ Discovery	Robotics	F & CS	Shop
Barton	(K-5)	520	699	74.4%	32	6	15	2	1	1	1	3		1	1			
Bay	(K-5)	323	486	66.5%	18	5	4	1	1		1	2	1	1				
Canaan	(K-5)	518	663	78.1%	31	2	9	3	1	1	1	2	1	1				
Eagle	(K-5)	590	702	84.0%	27	6	13	3	1	1	1	3	1		1			
Medford	(K-5)	531	729	72.8%	30	7	6	2	1	1	1	2	1					
River	(K-5)	377	486	77.6%	21	6	5	2	1		1	2		1				
Tremont	(K-5)	461	546	84.4%	29	6	8	3	1	1	1	3		1	1			
Oregon	(6-8)	511	1,017	50.2%	35	14	7	4	1	2	2	3	1	1		1	1	2
Saxton	(6-8)	702	1,305	53.8%	45	16	6	4	1	1	2	3	1					2
So Ocean	(6-8)	517	987	52.4%	34	12	6	4	1	2	2	3		1		1		2
High School	(9-12)	2,446	3,525	69.4%	(141 TS USED FOR CAPACITY) + (14 BOCES) + (5 Modular Classrooms) = (160) Teaching Stations (TS)													

Princeton Plan

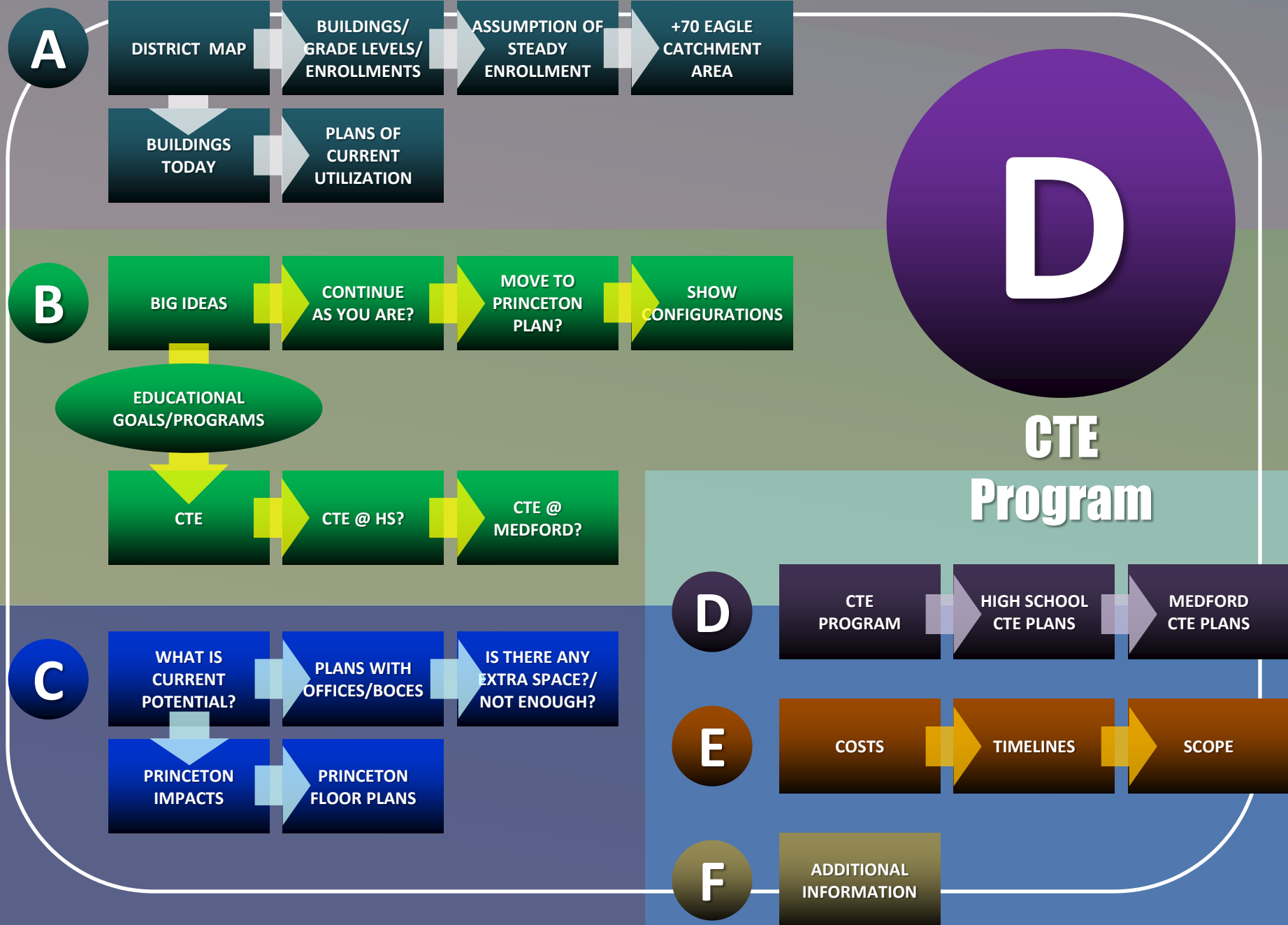
School		Students	Capacity	Capacity	CR's	Potential Addn'l	Support	P.E.	Library	Computer Room	Art	Music	Yoga	STEAM/ STEM/ Science	Wonder/ Creation/ Discovery	Robotics	F & CS	Shop
Barton	(PK-2)	543	639	85.0%	26	11	14	2	1	1	1	3	1	1	1			
Bay	(PK-2)	336	396	84.8%	17	0	4	1	1	1	1	2	1	1				
River	(PK-2)	336	396	84.8%	17	1*	8	2	1	1	1	3	1	1				
Tremont	(PK-2)	543	639	85.0%	26	1*	10	3	1	1	1	3	1	1	1			
Canaan	(3-5)	600	684	87.7%	27	3*	12	3	1	1	1	3	1	1				
Eagle	(3-5)	600	684	87.7%	27	2	9	3	1	1	1	3	1	3	1			
So Ocean	(3-5)	600	684	87.7%	27	3+6	16	4	1	2	2	3	1	1		1		
Oregon	(6-8)	750	918	81.7%	34	1*	10	4	1	2	2	3	1	1		1	1	2
Saxton	(6-8)	975	1,167	83.5%	42	9	12	4	1	1	2	3	1	1		1		2
High School	(9-12)	2,456	3,750	65.5%	(150 TS USED FOR CAPACITY) + (5 BOCES) + (5 Modular Classrooms) = (160) Teaching Stations (TS)													
Medford	HS				CTE													

* Potential additional classrooms if supports compress to half-sized classroom spaces.

Capacity varies with Utilization

Potential Princeton Plan

(PK-2) Barton	543 students
(PK-2) Bay	336 students
(PK-2) River	336 students
(PK-2) Tremont	543 students
(3-5) Canaan	600 students
(3-5) Eagle	600 students
(3-5) South Ocean	600 students
(6-8) Saxton	975 students
(6-8) Oregon	750 students
(9-12) High School	2,456 students
(CTE) Medford	HS students



Pat-Med CTE/HS Students and Dedicated CTE/HS Spaces

**Different Courses of Study
would require different
Types of Spaces, (i.e. –
Automotive vs. Digital Arts)**

**Lecture/ Lab would be self-
contained within each space**

**Twenty (20) Students per
Area of Study**

2.5 Hours AM/ 2.5 Hours PM

**If at HS, there would be
overlapping programs
between CTE and HS
schedule, (i.e. – what was
“Shop” would now be
“Construction Trades”,
Digital Arts are still Digital
Arts, etc.**

**(10) Courses of Study
(20) Students per Course
(AM Session) + (PM Session)
(400) Students Overall**

CTE Programs currently being considered by the District

**Computer Technology/
Networking**

Law Enforcement/ EMT

Medical Health Occupations

**Graphics Arts
& Web Design**

Construction Trades

Cosmetology

Culinary Arts

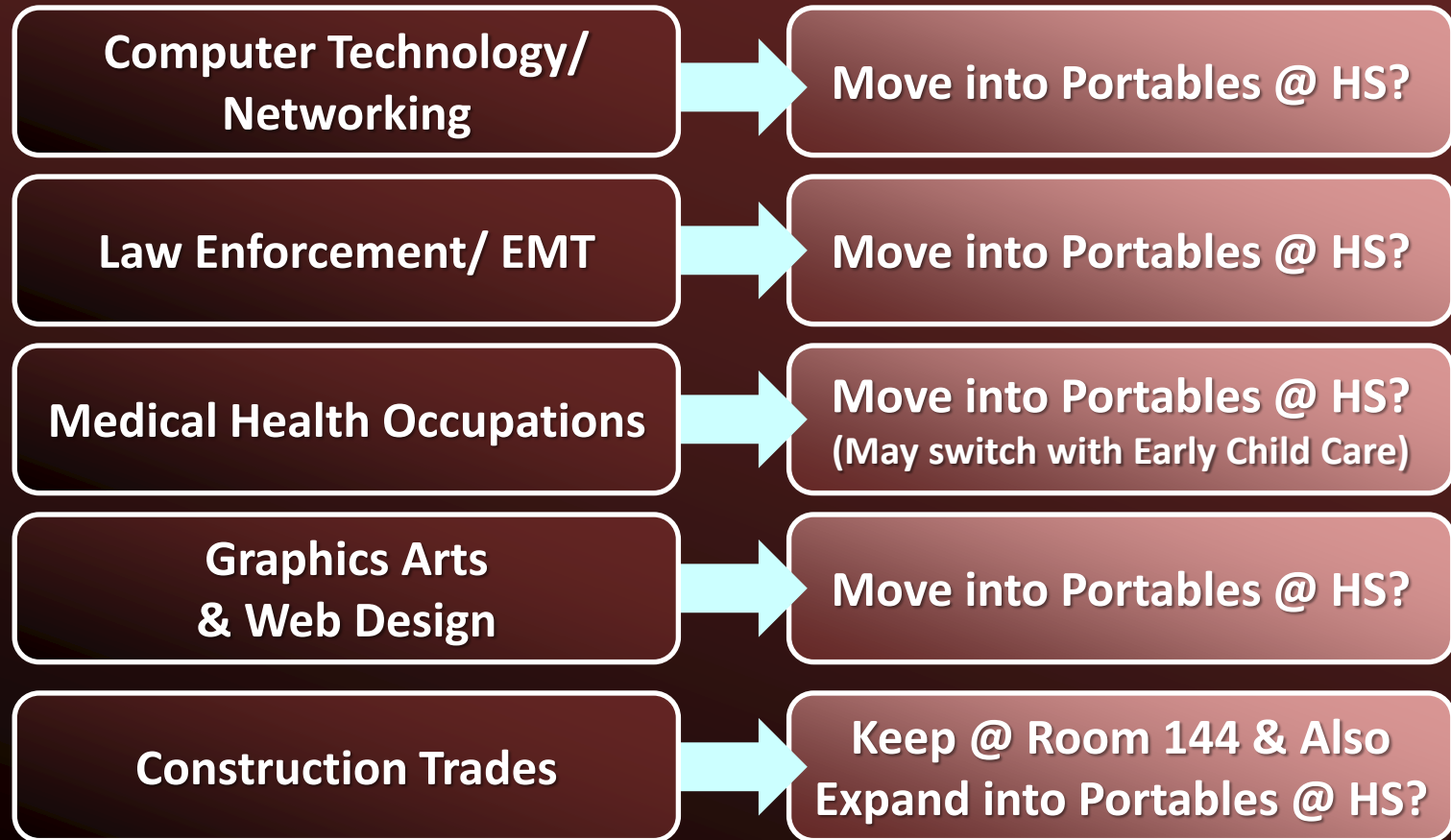
Early Child Care

Certified Personal Trainer

Automotive

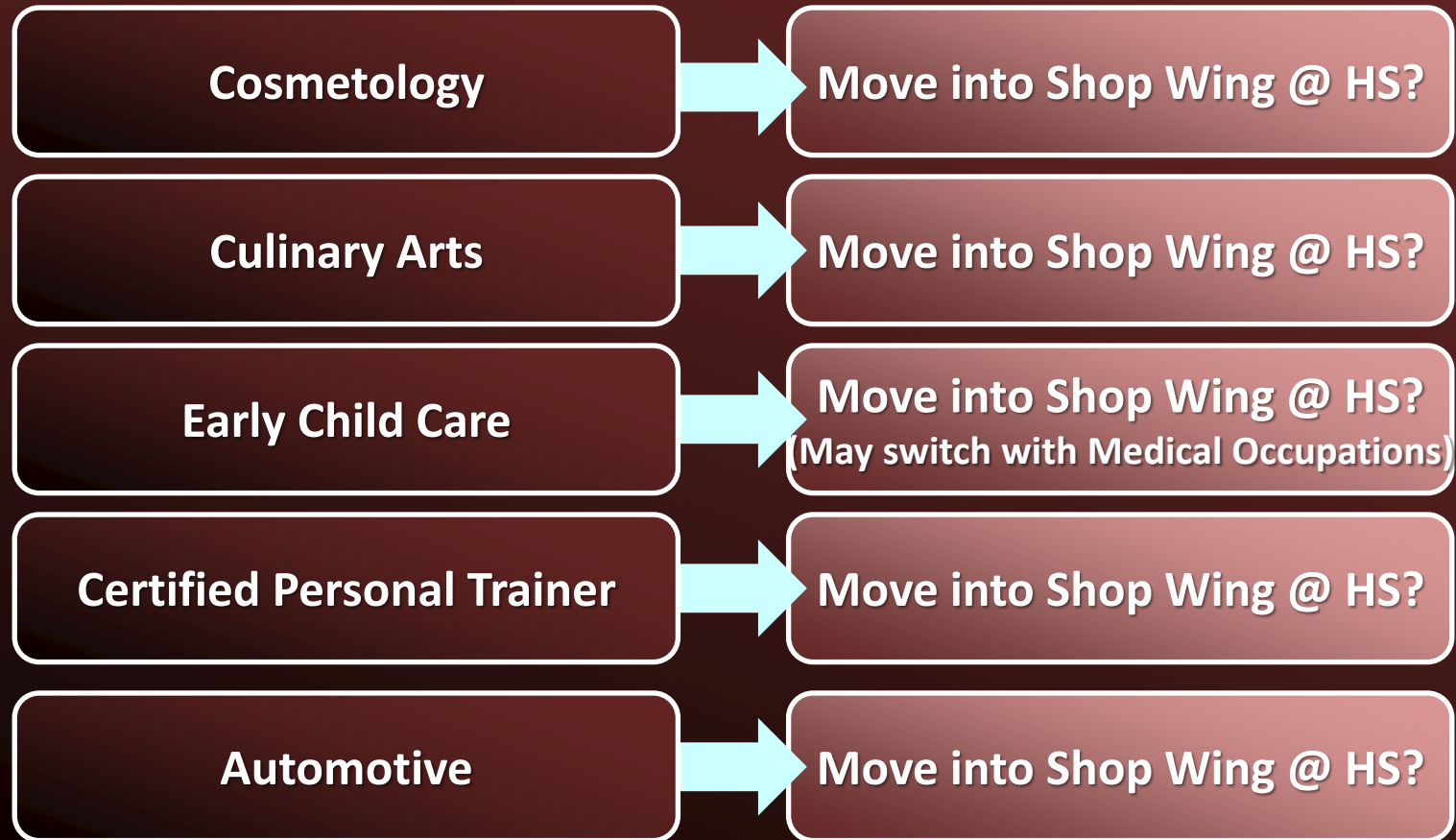
Phase 1 if at High School

Implement over first three years.



Phase 2 if at High School

Implement in successive years.



CTE Program

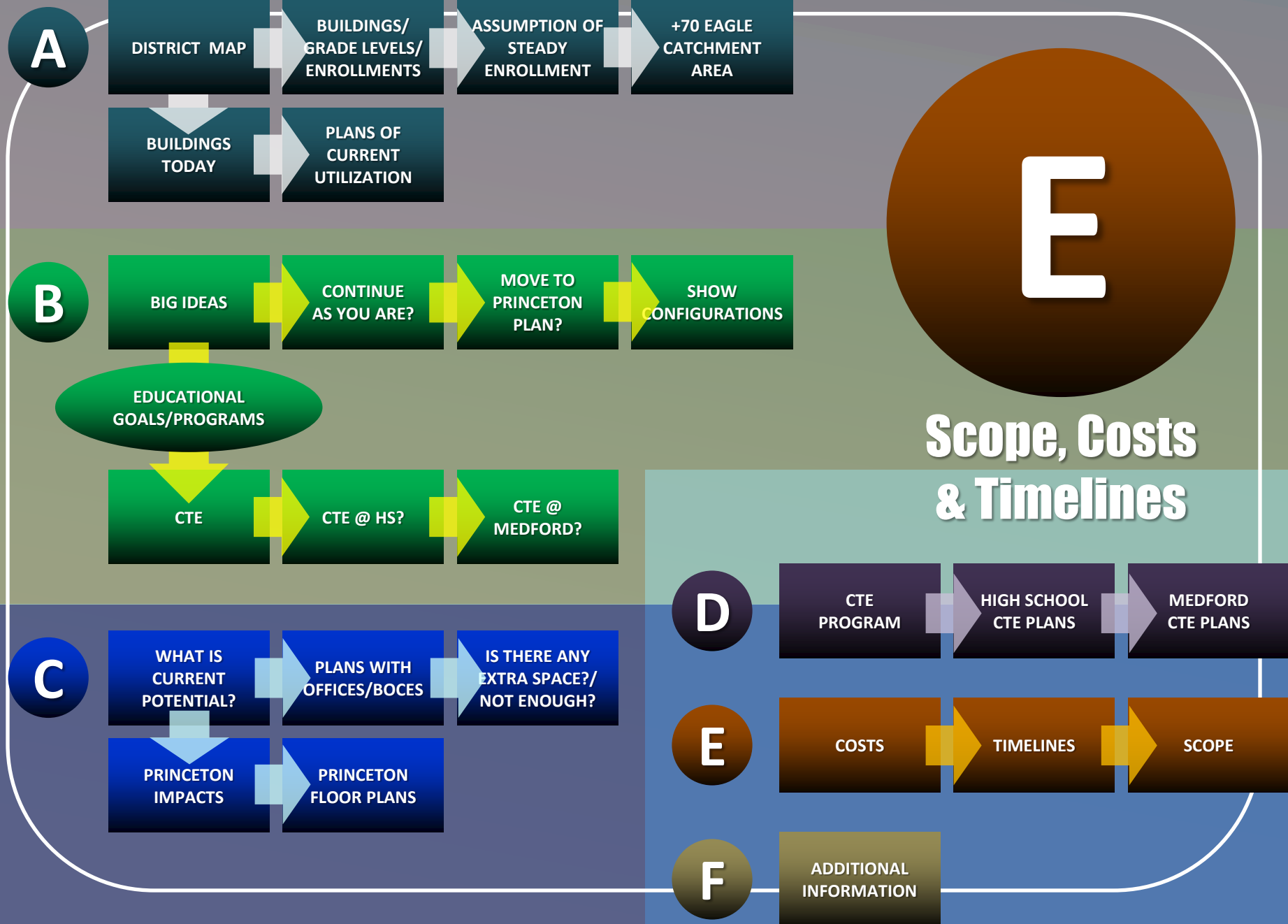
@ High School

Either Plan

CTE Program

@ Medford

Princeton Plan Only



Five Year Capital Plan 2017/2018

Location	Project	Funding Source	Cost	Estimated Completion Date
High School	Roof Recoat	Capital Reserve	\$3,000,000	Summer 2018
River	Roof Recoat	Capital Reserve	\$315,000	Summer 2018
South Ocean	Roof Recoat	Inter Fund Transfer to Capital	\$350,000	Summer 2018
High School	Tennis Courts	Capital Reserve	\$1,015,000	Summer 2018
South Ocean	Boys and Girls Lockers	Capital Reserve	\$300,000	Summer 2018
Saxton	Boys and Girls Lockers	Capital Reserve	\$340,000	Summer 2018
District Wide	ADA Compliance	Inter Fund Transfer to Capital and EXCEL Phase II	\$1,124,584	Spring 2019
Total:			\$6,444,584	

Next Steps

- Recommend resolution for inclusion of a proposition on the May 15th, 2018 ballot for the establishment of new Capital Reserve - February agenda;
- Prepare language to be included on proposition for May 15, 2018 Budget vote;
- Discuss vote on potential projects to be funded from the new Capital Reserve Fund, if the May 15, 2018 proposition passes;
- Target date for community approval of proposed Capital Reserve projects – **October 16, 2018**;
- **October 16, 2018** community approval *should* enable all pending projects to be completed by August 2019.

Potential Costs

Princeton Plan

Potential Princeton Plan Costs

(K-2) Barton	\$ 950K
(K-2) Bay	\$ 200K
(K-2) River	\$ 500K
(K-2) Tremont	\$ 425K
(3-5) Canaan	\$ 450K
(3-5) Eagle	\$ 200K
(3-5) South Ocean	\$ 600K
(6-8) Oregon	\$ 0K
(6-8) Saxton	\$ 75K
<u>(9-12) High School</u>	<u>\$ 0K</u>
	\$ 3.4M

Potential Costs

Different CTE Options

Alt to Princeton Plan (CTE @ HS)

CTE Modular CR Renovations	\$ 1.6M
CTE Relocation of HS Programs	\$ 2.6M
<u>CTE Main Building Renovations</u>	<u>\$ 4.7M</u>
	\$ 8.9M

Princeton Plan (CTE @ Medford)

CTE Medford New & Renov Space	\$ 9.6M
<u>District-Wide Princeton Plan</u>	<u>\$ 3.4M</u>
	\$ 13.0M

Princeton Plan (CTE @ HS)

CTE @ High School	\$ 8.9M
<u>District-Wide Princeton Plan</u>	<u>\$ 3.4M</u>
	\$ 12.3M

Playgrounds & Running Tracks

	Alternate Plan		Princeton Plan
Barton	(K-5) \$700K*	or	(PK-2) \$750K
Bay	(K-5) \$150K	or	(PK-2) \$375K
Canaan	(K-5) \$525K*	or	(3-5) \$525K
Eagle	(K-5) \$150K	or	(3-5) \$150K
Medford	(K-5) \$575K*	or	(CTE) \$0
River	(K-5) \$150K	or	(PK-2) \$325K
Tremont	(K-5) \$750K	or	(PK-2) \$750K
Oregon	Oregon Running Track (\$1M) Either Plan		
Saxton	Saxton Running Track (\$1M) Either Plan		
<u>South Ocean</u>	<u>(n/a)</u>	<u>or</u>	<u>(3-5) \$375K</u>
Playgrounds/Tracks	\$ 5,000,000		\$ 5,250,000
Medford Loop	\$ 500,000		\$ 0
Total	\$ 5,500,000		\$ 5,250,000

Potential Costs

Adding in Playgrounds, Running Tracks, etc.

Alternate to Princeton Plan

Playgrounds & HS Dust Collection	\$ 3.3M
Medford Drop Off Loop	\$ 0.5M
Oregon & Saxton Tracks	\$ 2.0M
<u>CTE @ High School</u>	<u>\$ 8.9M</u>
	\$ 14.7M

Princeton Plan (CTE @ HS)

Playgrounds & HS Dust Collection	\$ 3.6M
Oregon & Saxton Tracks	\$ 2.0M
Princeton Plan Improvements	\$ 3.4M
<u>CTE @ High School</u>	<u>\$ 8.9M</u>
	\$ 17.9M
If CTE @ Medford	+ \$ 0.7M

Alternate to Princeton

Time Line & Costs

(Combine Schedule with Phased Costs & Scope)

Phase 1

Tracks/Playgrounds/HS Dust Collection/ Medford Traffic Loop Improvements

\$ 5.8M

(BOE Approval May 2018)

Vote: Oct. 2018

Build: Summer 2019

Occupy: Sept 2019

Phase 2

Step One CTE @ HS Modulares

\$ 0.9M

(BOE Approval May 2018)

Vote: Oct 2018

Build: Summer 2019

Occupy: Sept 2019

Phase 3

Step Two CTE @ HS Modulares

\$ 0.7M

Vote: May 2019

Build: Summer 2020

Occupy: Sept 2020

Phase 4

Relocate HS Art & Mechanical Drawing

\$ 2.6M

Vote: May 2020

Build: Summer 2022

Occupy: Sept 2022

Phase 5

Move CTE into High School Shop Wing

\$ 4.7M

Vote: May 2021

Build: Summer 2023

Occupy: Sept 2023

\$14.7M

Princeton Plan

Time Line & Costs

CTE at High School

Phase 1

\$ 5.6M

(BOE Approval May 2018)

Tracks/Playgrounds/HS Dust Collection

Vote: Oct. 2018

Build: Summer 2019

Occupy: Sept 2019

Phase 2

\$ 0.9M

(BOE Approval May 2018)

Step One CTE @ HS Modulares

Vote: Oct 2018

Build: Summer 2019

Occupy: Sept 2019

Phase 3

\$ 4.1M

Step Two CTE @ HS Modulares/ Princeton Plan Building Modifications

Vote: May 2019

Build: Summer 2020

Occupy: Sept 2020

Phase 4

\$ 2.6M

Relocate HS Art & Mechanical Drawing

Vote: May 2020

Build: Summer 2022

Occupy: Sept 2022

Phase 5

\$ 4.7M

Move CTE into High School Shop Wing

Vote: May 2021

Build: Summer 2023

Occupy: Sept 2023

\$17.9M

Princeton Plan

Time Line & Costs

CTE at Medford

Phase 1

\$ 5.6M

(BOE Approval May 2018)

Tracks/Playgrounds/HS Dust Collection

Vote: Oct. 2018

Build: Summer 2019

Occupy: Sept 2019

Phase 2

\$ 3.4M

Princeton Plan Building Modifications

Vote: May 2019

Build: Summer 2020

Occupy: Sept 2020

Phase 3

\$ 9.6M

CTE @ Medford

Vote: May 2020

Build: Start Fall 2022

Occupy: Sept 2023

**Note: In this schedule there is no CTE @ High School.
Would CTE still go into HS Modulares in 2019 and 2020
until Medford is ready in 2023 for all of CTE?
(See next slide for alternative.)**

\$18.6M

Phase 1

Tracks/Playgrounds/HS Dust Collection

\$ 5.6M

Vote: Oct. 2018

Build: Summer 2019

(BOE Approval May 2018)

Occupy: Sept 2019

Phase 2

Step One CTE @ HS Modulares

\$ 0.9M

Vote: Oct 2018

Build: Summer 2019

(BOE Approval May 2018)

Occupy: Sept 2019

Phase 3

Step Two CTE @ HS Modulares/ Princeton Plan Building Modifications

\$ 4.1M

Vote: May 2019

Build: Summer 2020

Occupy: Sept 2020

Phase 4

CTE @ Medford

\$ 9.6M

Vote: May 2020

Build: Start Fall 2022

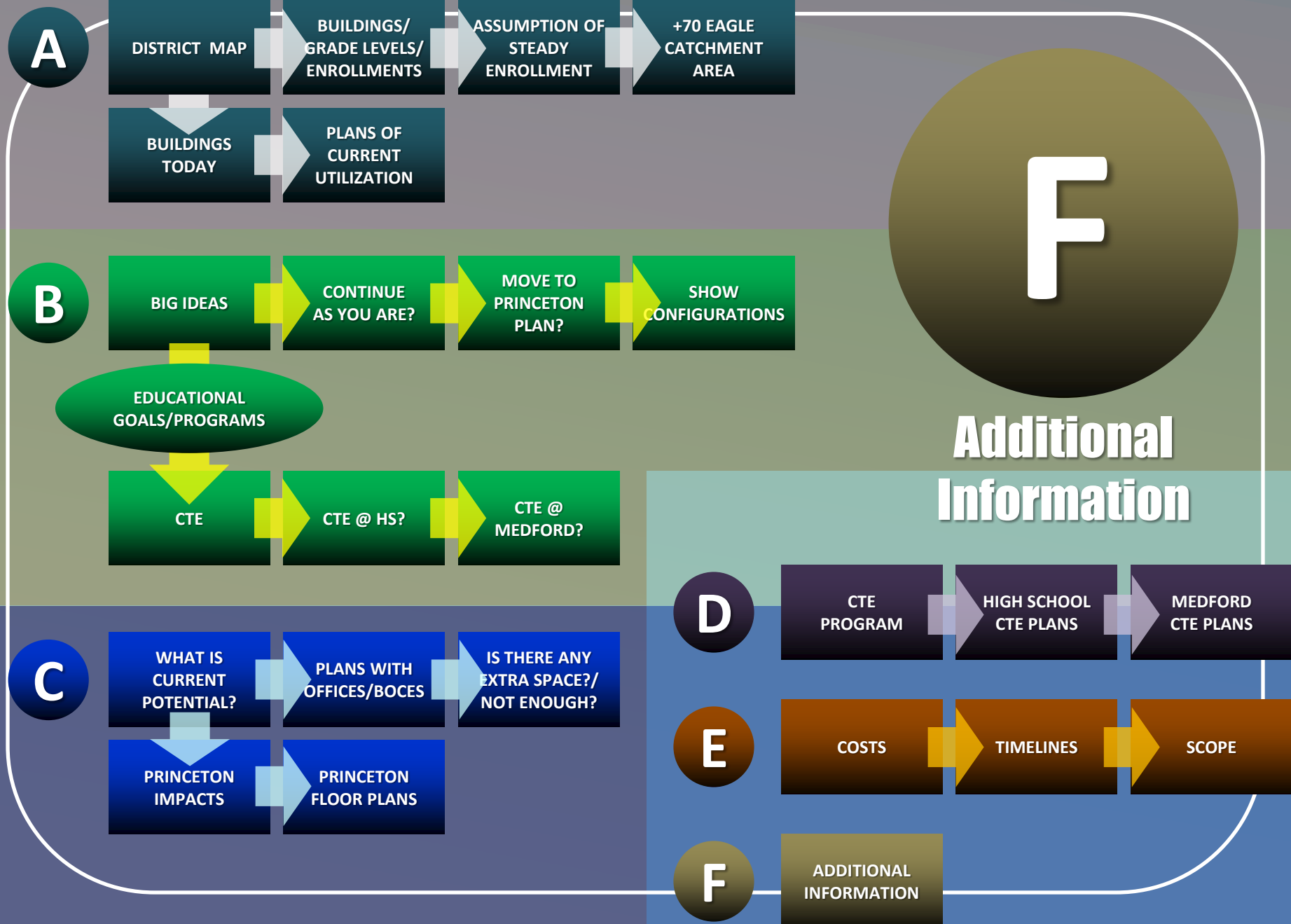
Occupy: Sept 2023

**If CTE moves in to HS Modulares temporarily in 2019/2020,
but then moves permanently to Medford by 2023.**

\$20.2M

POTENTIAL COSTS BY CONFIGURATION

Alternate	(CTE @ HS)	\$ 14.7M
Princeton	(CTE @ HS)	\$ 17.9M
Princeton	(CTE @ Medford)	\$ 18.6M
Princeton	(CTE @ Medford)/ (CTE Short Term @ HS Mods)	\$ 20.2M



Playgrounds & Running Tracks

More specific detail at each site.

Barton Elementary School

Elementary Age Play Area

A: (K-5)
\$325K

P: (PK-2)
\$375K

- **IMPROVE SEPARATION BETWEEN PLAY AREA AND DRIVEWAY OR RELOCATE PLAY AREA**
 - **IMPROVE FENCE (1" MESH), GATES & PEDESTRIAN CROSSINGS**
 - **INCREASE SPACE/BUFFER BETWEEN PLAY AREA & VEHICLE TRAFFIC**
 - **CONSIDER RELOCATING PLAYGROUND CLOSER TO SCHOOL- INSIDE EXISTING PAVED PLAY AREA SOUTH OF DRIVEWAY**
- **PLAYGROUND EQUIPMENT**
 - **REMOVE EQUIPMENT THAT IS OUTDATED, DAMAGED OR DOES NOT MEET CURRENT CONSUMER PRODUCT SAFETY COMMISSION (CPSM) GUIDELINES**
 - **RE-USE RECENTLY INSTALLED PLAYGROUND EQUIPMENT & SIGNAGE IN GOOD CONDITION THAT MEETS CPSC GUIDELINES**

Barton Elementary School

Elementary Age Play Area

- **SAFETY SURFACING**
 - **POURED-IN-PLACE RUBBER SURFACING IS FAILING- REMOVE & REPLACE W/RUBBER TILES SIMILAR TO THOSE INSTALLED RECENTLY AT OTHER DISTRICT SCHOOLS**
 - **INCORPORATE DRAINAGE AND FLUSH CURBING AT PERIMETER**
- **OPEN UP PLAY AREA TO ATHLETIC FIELDS TO ENCOURAGE EXERCISE**
 - **ELIMINATE FENCE/GATES BETWEEN PLAY AREA AND ATHLETIC FIELDS**
- **IMPROVE BARRIER-FREE ADA ACCESS TO & AROUND PLAY AREA**

Barton Elementary School

Kindergarten Age Play Area

A: (K-5)
\$375K

P: (PK-2)
\$375K

- **IMPROVE SEPARATION BETWEEN PLAY AREA AND DRIVEWAY**
 - **IMPROVE FENCE (1" MESH), GATES & CROSSINGS**
 - **INCREASE SPACE/BUFFER BETWEEN PLAY AREA AND VEHICLE TRAFFIC**
- **PLAYGROUND EQUIPMENT**
 - **EQUIPMENT IS OUTDATED AND DAMAGED-REMOVE & REPLACE WITH NEW EQUIPMENT THAT MEETS CURRENT CPSC GUIDELINES**
- **SAFETY SURFACING**
 - **POURED-IN-PLACE RUBBER SURFACING IS FAILING- REPLACE WITH RUBBER TILES SIMILAR TO THOSE INSTALLED AT OTHER SCHOOLS IN DISTRICT**
 - **REDUCE AREA OF SAFETY SURFACE TO SAFETY ZONES OF PLAY EQUIPMENT**

Barton Elementary School Kindergarten Age Play Area

- **IMPROVE BARRIER-FREE ADA ACCESS TO & AROUND PLAY AREA**
 - **RECONSTRUCT ACCESS RAMP AT STEP FROM BUILDING PAD TO SIDEWALK**

Bay Elementary School

Play Area

A: (K-5)
\$150K

P: (PK-2)
\$375K

PLAYGROUND EQUIPMENT

- **LARGE CUSTOM PLAY STRUCTURE IN GOOD CONDTION TO REMAIN**
- **3-BAY/6 BELT SEATS SWING UNIT IN GOOD CONDITION TO BE RE-USED- LOWER SWING UNIT TO BE FLUSH WITH SURROUNDING GRADE/ELIMINATE 12" STEP @ PERIMETER**

SAFETY SURFACING

- **POURED-IN-PLACE RUBBER SURFACING UNDER LARGE CUSTOM PLAY STRUCTURE TO REMAIN- ADD FLUSH PERIMETER CURB OR WALKWAY**
- **RUBBER TILES UNDER SWINGS TO REMOVED RE-USED- LOWER TILES & PLASTIC EDGE TO BE FLUSH WITH SURROUNDING GRADE**

Bay Elementary School

Play Area

IMPROVE BARRIER-FREE ADA ACCESS TO PLAY AREAS

- **PROVIDE 6' WIDE PAVED WALKWAYS TO PLAY AREAS FROM PARKING AREA SIDEWALK AND PAVED PLAY AREA ADJACENT TO SCHOOL BUILDING**

LANDSCAPING

- **AERATE, TOPDRESS & GRASS SEED SURROUNDING AREA TO IMPROVE NATURAL TURF USING CONSERVATION GRASS SEED MIX**

Canaan Elementary School

Elementary Age Play Area

A: (K-5)
\$150K

P: (3-5)
\$150K

- **IMPROVE SEPARATION BETWEEN PLAY AREA & PARKING**
 - **PROVIDE BARRIER/GUARD RAIL OUTSIDE FENCE BETWEEN PARKING AREA & PLAY AREA**
- **PLAYGROUND EQUIPMENT**
 - **LARGE, CUSTOM PLAY STRUCTURE IS IN GOOD CONDITION TO REMAIN**
- **SAFETY SURFACING**
 - **POURED-IN-PLACE SAFETY SURFACING IN GOOD CONDITION TO REMAIN- ADD FLUSH CURB OR PAVEMENT AND IMPROVE DRAINAGE AROUND PERIMETER**

Canaan Elementary School

Elementary Age Play Area

- **LANDSCAPING**
 - **AERATE, TOPDRESS & GRASS SEED SURROUNDING AREA TO IMPROVE NATURAL TRUF USING CONSERVATION GRASS SEED MIX**

Canaan Elementary School

Kindergarten Age Play Area

A: (K-5)
\$375K

P: (3-5)
\$375K

- **IMPROVE SEPARATION BETWEEN PLAY AREA & VEHICLE DRIVEWAY**
 - **PROVIDE BARRIER/GUARD RAIL BETWEEN DRIVEWAY & PLAY AREA**
- **PLAYGROUND EQUIPMENT**
 - **EXISTING PLAY EQUIPMENT IS OUTDATED AND FAILING- REPLACE WITH NEW EQUIPMENT THAT MEETS CURRENT CPSC GUIDELINES**
- **SAFETY SURFACING**
 - **POURED-IN-PLACE RUBBER SURFACING IS IN POOR CONDITION- REMOVE & REPLACE W/RUBBER TILES SIMILAR TO THOSE INSTALLED RECENTLY AT OTHER DISTRICT SCHOOLS- PROVIDE FLUSH PERIMETER CURB OR WALK AND DRAINAGE AROUND PERIMETER OF SURFACING**

Canaan Elementary School

Kindergarten Age Play Area

IMPROVE BARRIER-FREE ADA ACCESS TO PLAY AREAS

- PROVIDE 6' WIDE PAVED WALKWAYS TO PLAY AREAS FROM EXISTING CROSSWALK ADJACENT TO SCHOOL BUILDING**

LANDSCAPING

- AERATE, TOPDRESS & GRASS SEED SURROUNDING AREA TO IMPROVE NATURAL TURF USING CONSERVATION GRASS SEED MIX**

Eagle Elementary School

Play Area

A: (K-5)
\$150K

P: (3-5)
\$150K

- **PLAYGROUND EQUIPMENT**
 - **EXISTING PLAY EQUIPMENT- CUSTOM PLAY STRUCTURE AND SURROUNDING STAND-ALONE EQUIPMENT- IS RELATIVELY NEW AND IN EXCELLENT CONDITION- INCORPORATE INTO IMPROVED PLAY AREA**
- **SAFETY SURFACING**
 - **RUBBER TILE SURFACING IS RELATIVELY NEW AND IN EXCELLENT CONDITION- INCORPORATE INTO IMPROVED PLAY AREA**
 - **PROVIDE FLUSH PERIMETER CURB OR WALK AND DRAINAGE AROUND PERIMETER OF SURFACING**
- **LANDSCAPING**
 - **AERATE, TOPDRESS AND GRASS SEED SURROUNDING AREA WITH CONSERVATION SEED MIX TO IMPROVE NATURAL TURF**

Eagle Elementary School

Play Area

- **PROVIDE PROTECTIVE BARRIER FENCE TO SEPARATE FROM BASEBALL OUTFIELD**
 - **IF ADJACENT ATHLETIC FIELD IS USED FOR BASEBALL, PROVIDE PROTECTIVE FENCING TO SEPARATE AREAS**

Medford Elementary School

Elementary Age Play Area

A: (K-5)
\$325K

P: (CTE)
\$0K

- **PLAYGROUND EQUIPMENT**
 - **LARGE CUSTOM PLAY STRUCTURE IS DATED & FAILING-
REPLACE WITH NEW CUSTOM STRUCTURE THAT MEETS
CURRENT CPSM GUIDELINES**
 - **RECENTLY INSTALLED CLIMBING WALL STRUCTURE AND
SIGNAGE IS IN GOOD CONDITION- RE-USE IN IMPROVED PLAY
AREA**
- **SAFETY SURFACING**
 - **RECENTLY INSTALLED RUBBER TILES ARE IN GOOD CONDITION-
RE-USE IN IMPROVED PLAY AREA**

Medford Elementary School

Elementary Age Play Area

- **IMPROVE BARRIER-FREE ADA ACCESS TO PLAY AREAS**
 - **PROVIDE 6' WIDE PAVED WALKWAYS TO PLAY AREAS FROM EXISTING SIDEWALK ADJACENT TO DRIVEWAY**
- **LANDSCAPING**
 - **AERATE, TOPDRESS & GRASS SEED SURROUNDING AREA TO IMPROVE NATURAL TURF USING CONSERVATION GRASS SEED MIX**
 - **PRUNE TREES TO ELIMINATE DEAD BRANCHES AND BRANCHES THAT INTERFERE WITH PLAY SAFETY ZONE**

Medford Elementary School

Kindergarten Age Play Area

A: (K-5)
\$250K

P: (CTE)
\$0K

- **PLAYGROUND EQUIPMENT**
 - **LARGE CUSTOM PLAY STRUCTURE, STAND-ALONE EQUIPMENT AND SIGNAGE ARE RELATIVELY NEW AND IN GOOD CONDITION- INCORPORATE INTO IMPROVED PLAY AREA**
- **SAFETY SURFACING**
 - **POURED-IN-PLACE SURFACING IS IN GOOD CONDITION WITH SOME DAMAGED AREAS- REPAIR AND INCORPORATE INTO IMPROVED PLAY AREA**
 - **PROVIDE FLUSH CURB OR WALK WITH DRAINAGE AROUND PERIMETER TO CONTAIN EDGE OF SURFACING**

Medford Elementary School

Kindergarten Age Play Area

- **IMPROVE BARRIER-FREE ADA ACCESS TO PLAY AREAS**
 - **PROVIDE 6' WIDE PAVED WALKWAYS TO PLAY AREAS FROM EXISTING SIDEWALK ADJACENT TO SCHOOL BUILDING/DRIVEWAY**
- **LANDSCAPING**
 - **AERATE, TOPDRESS & GRASS SEED SURROUNDING AREA TO IMPROVE NATURAL TURF USING CONSERVATION GRASS SEED MIX**
 - **PRUNE TREES TO ELIMINATE DEAD BRANCHES AND BRANCHES THAT INTERFERE WITH PLAY SAFETY ZONE**

Medford (K-5)

Drop Off Loop

River Elementary School

Play Area

A: (K-5)
\$150K

P: (PK-2)
\$325K

- **PLAYGROUND EQUIPMENT**
 - **RECENTLY INSTALLED EQUIPMENT MANUFACTURED BY PLAYWORLD SYSTEMS- LARGE CUSTOM PLAY STRUCTURE AND STAND-ALONG CLIMBING WALLS- ARE IN EXCELLENT CONDITION AND SHOULD BE LEFT IN PLACE/INCORPORATED INTO IMPROVED PLAY AREA**
 - **OLDER, OUTDATED EQUIPMENT MANUFACTURED BY LANDSCAPE STRUCTURES SHOULD BE REMOVED & REPLACED WITH EQUIPMENT THAT MEETS CURRENT C.P.S.C. GUIDELINES**
- **RUBBER TILE SAFETY SURFACING**
 - **RUBBER TILE SAFETY SURFACING IS RELATIVELY NEW AND SHOULD BE SAVED/ INCORPORATED INTO IMPROVED PLAY AREA**

River Elementary School

Play Area

- **PROVIDE BARRIER-FREE ACCESS TO PLAY AREAS FROM SCHOOL BUILDING**
 - **INSTALL NEW WALKWAYS CONNECTING EXISTING PAVEMENT TO PLAY AREAS**
- **LANDSCAPING**
 - **AERATE, TOPDRESS AND GRASS SEED SURROUNDING AREA USING CONSERVATION SEED MIX TO IMPROVE NATURAL TURF**

Tremont Elementary School

Elementary Age Play Area

A: (K-5)
\$375K

P: (PK-2)
\$375K

- **PLAYGROUND EQUIPMENT**
 - **LARGE CUSTOM PLAY STRUCTURE IS OUTDATED AND SHOWING SIGNS OF FAILURE- REMOVE AND REPLACE WITH NEW EQUIPMENT THAT MEETS CPSC GUIDELINES**
 - **SIGNAGE IS RELATIVELY NEW AND SHOULD REMAIN/BE INCORPORATED INTO IMPROVED PLAY AREA**
- **SAFETY SURFACING**
 - **POURED-IN-PLACE SAFETY SURFACING IS IN FAIR CONDITION WITH SURFACE BEGINNING TO SHOW SIGNS OF FAILURE- REMOVE & REPLACE WITH RUBBER TILE SURFACING**
 - **THE PERIMETER WOOD EDGE IS NOT FLUSH WITH SURROUNDING LAWN AND FAILING- REMOVE AND REPLACE WITH FLUSH CURB OR PERIMETER WALK WITH DRAINAGE**

Tremont Elementary School

Elementary Age Play Area

- **PROVIDE BARRIER-FREE ACCESS TO PLAY AREAS FROM SCHOOL BUILDING**
 - **INSTALL NEW WALKWAYS CONNECTING EXISTING PAVEMENT TO PLAY AREAS**
- **LANDSCAPING**
 - **AERATE, TOPDRESS AND GRASS SEED SURROUNDING AREA USING CONSERVATION SEED MIX TO IMPROVE NATURAL TURF**

Tremont Elementary School

Kindergarten Age Play Area

A: (K-5)
\$375K

P: (PK-2)
\$375K

- **PLAYGROUND EQUIPMENT**
 - **PLAYGROUND EQUIPMENT IS OUTDATED & FAILING- REMOVE AND REPLACE WITH NEW EQUIPMENT THAT MEETS CPSC GUIDELINES FOR KINDERGARTEN PLAY**
 - **MORE RECENTLY INSTALLED SIGNAGE SHOULD BE SAVED AND INCORPORATED INTO IMPROVED PLAY AREA**
- **SAFETY SURFACING**
 - **RUBBER TILE SAFETY SURFACING WAS INSTALLED RECENTLY AND IS IN GOOD CONDITION- RE-USE FOR IMPROVED PLAY AREA**

Tremont Elementary School

Kindergarten Age Play Area

- **RETAINING WALL & PERIMETER FENCE**
 - **WOOD RETAINING WALL IS FAILING/SPLINTERING AND SHOULD BE REPLACED OR ELIMINATED BY RE-GRADING PERIMETER**
 - **CHAIN LINK FENCING IMMEDIATELY ADJACENT TO PLAY AREA SHOULD BE UPGRADED WITH 1" FABRIC TO DISUADE CLIMBING**
- **PROVIDE BARRIER-FREE ACCESS TO PLAY AREAS FROM SCHOOL BUILDING**
 - **ELIMINATE STEP OR PROVIDE ACCESS RAMP BETWEEN BUILDING AND PLAY AREA**
- **LANDSCAPING**
 - **FRUIT FROM EXISTING TREE IS HAZARDOUS TO USERS- REMOVE TREE OR RELOCATE IMPROVED PLAY AREA AWAY FROM TREE**

Potential

HS Greenhouse

Planning Update

March 5, 2018

Thank you for your time.